



ONCE BUSINESS FOREVER FRIENDS

哈尔滨润宝科技有限公司

哈尔滨松北区创新二路1560-2号
电话: 0451-51066797
手机: 18604505477
E-mail: chen@rainbowtechnology.net

宁波分公司
浙江省宁波市北仑区梅山街道三创基地2期1号楼811
手机: 18521368991
E-mail: franklin@rainbowtechnology.net

长春分公司
吉林省长春市绿园区青年路兴业商务园 510室
手机: 13843140588
E-mail: vickey@rainbowtechnology.net

Harbin Rainbow Technology Co.,Ltd.

Address: No. 1560-2 Chuangxin second Road, Songbei District, Harbin, China
Tel: +86-451-51066797
Mobile: +86-18604505477
E-mail: chen@rainbowtechnology.net

Ningbo branch company
No. 811, Building 1, Phase 2, Sanchuang Base, Meishan Street, Beilun District, Ningbo City, Zhejiang Province.
Mobile: 18521368991
E-mail: franklin@rainbowtechnology.net

Changchun branch company
Room 510, Xingye business park, Qingnian Road, Lvyuan District, Changchun City, Jilin Province
Mobile: 13843140588
E-mail: vickey@rainbowtechnology.net

哈尔滨润宝科技有限公司
Harbin Rainbow Technology Co.,Ltd.



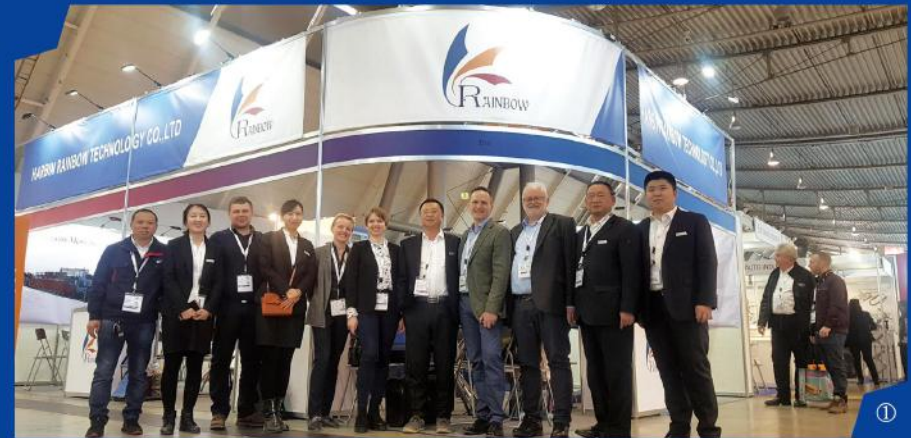
About us



Harbin Rainbow Technology Co.,Ltd is one of the biggest fastener equipment dealer and manufacturer in China. We have invested one Cold former factory(Ningbo), one Thread rolling machine factory(Ningbo), one Heat treatment furnace factory(Suqian) and one Electro plating equipment factory(Wuxi).

We have more than 30 years experiences in supplying all kinds of fastener equipment, such as Bolt Maker, Nut Maker, Cold Heading Machine, Thread Rolling Machine, Wire Drawing Machine, Heat Treatment Furnace and Zinc Plating line, etc. to customers all over the world. With our reputation increasing and our team becoming more professional, we have experienced a significant growth in business during the recent years. Nowadays, more and more reputed companies compete in a long-term cooperation with us.

We abide by the principles of honesty, credibility, and mutual-benefit. Our motto is "ONCE BUSINESS, FOREVER FRIENDS", we will do our best to serve clients at home and abroad. Due to our top-notch professional knowledge and rich trade experience, we have seen our market developing ability and actual business growth with an increasingly faster pace. We sincerely look forward to working with you. Let's build a great future together!



①



②



③

- 1 Stuttgart Fastener Exhibition in Germany in March 2019
- 2 Install machine in Gude Company in Germany
- 3 Shanghai Fastener Exhibition in China June 2019
- 4 Mumbai Fastener Exhibition in India in May 2019



④



Production Equipment 生产设备



高端的
加工装备
是产品精度的基本保障
guarantee for the precision of the products



可制结构复杂的冷墩机主要零部件
Produce main parts with complex structures



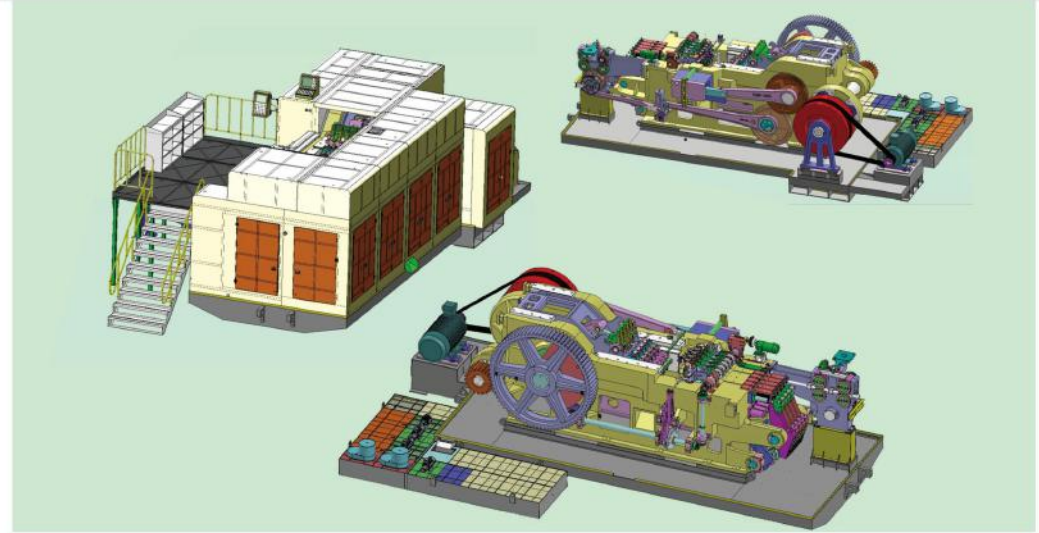
专业的工装与加工设备
Produce tool set - up and processing equipment

以人本、成本及规模化资本作为企业稳健发展与持久经营的有效保障，建立起适应公司发展规律的各项标准与规范。于硬件，公司斥巨资投入大批先进的精加工设备，建立标准工装，以期保证产品研发高起点、高品质的战略要求，以极限提升冷墩成形机的各项性能指标。

The company regards human resources, cost and large sum of capital as the effective guarantee of stable developments and sustainable management of the enterprise. We establish various standards, rules and regulations that accord with the company's developing progress. The company invests in large sum of money in a big group of the advanced metal processing devices. We set up standard tooling to ensure high starting point and high quality strategic requirements of the product R & D. We aim at increasing various technical indexes of cold - heading forming machine to the greatest extent.



Production Workshop 生产车间



Cold Forging Machine 螺栓冷镦机

- ◆ 所有多工位机型均采用空压离合刹车器，机器启动电流小并能实现"寸动"，"单次行程"及"连续行程"。除"寸动"方式外，主滑台在停车时自动停止在最后位置，以利于提供最大操作调整空间。

All multi - station models apply air clutch brake with small starting current, allowing operation modes of " Inching", "Single Stroke" and "Continuous Running". The main sliding table can automatically stop at its rear position while operated under "Single Stroke" and "Continuous Running" modes, so as to obtain maximum space for adjustment.

- ◆ 圆周式剪料机构可确保材料剪断面整齐平整。

Enclosure cutting off die and knife deliver a clear and perfect cross section of blank for forming.

- ◆ 该剪料机构可使剪料滚轮作用力的方向与剪刀杆中心一致，从而使剪切力在一条线上传递，可获得较高的剪切效率及稳定性。

The cut off roller is designed at the center of the cut off rod to avoid eccentric force occurred on the roller pin, so as to obtain high efficiency and stability of the cutting mechanism.

- ◆ 与主滑台退回动作同步的前通出 (P . K . O) 动作可使工件在成形后暂时停留在打模内，以免被冲具带出。

Front knock - out (P . K . O) actions coincide with back action of main sliding table, allowing the forged parts temporarily stay in the forming die, instead of being taken away by the punch.

- ◆ 本台、主滑台、机械手机座等主要机件在铸造后经过消除残余应力处理，以防止变形并保持机器精度的长期稳定。

The machine main parts such as the bench, main sliding table etc had been treated for removing the residue stress after casting to avoid any deformation and keep stable precision of the machine in long term.



M6--M40 3-6 工位高速冷镦机的研发制造
M6--M40 3-6 Station High-speed cold heading and forming machine



可制形状复杂，成型度强大的不锈钢产品。
Complex shape and big forming force products.



可制同心度要求高，变异系数大的产品。
High concentricity and great shape changed products.



部件主要技术特点/ Main Features



图01为RBF系列多工位零件成形机配置的可反转的螺母类和固定式螺栓类产品夹仔。
Fig.01 reversible nuts and fixed bolt clips that match with RBF serial multi-station parts forming machine.



图02为夹料传送为旋摆方式，夹料力为气动并可调，工件传送稳定可靠，适用于机器高速运转。第一工位夹仔遇到送料短寸的可自动张开松料并停机报警。
Fig.02 transfer conveyance of rotary swing mode and transfer force of adjustable pneumatic mode ensures stable and reliable work -- piece conveyance and high speed operation of the machine. The first station clip can automatically loose short dimension feeding, stop and alarm.



图03为夹仔台往返运动和夹仔的开闭动作均由共同的中间传动轴驱动，可确保动作的协调。
Fig.03 reciprocating movement of clipping table and opening / closing actions of the clips are both driven by a joint intermediate shaft to ensure the coordinated actions.

部件主要技术特点/ Main Features



图04为后通机构，各工位后通机构可分为单独调整且最后一个工位可通过调整凸轮位置成更换凸轮实现切边或通出动作，所有机型的通出前死点位置不变，部分机型可选择加装带有数字显示的手轮式或数控后通牙管调整机构。
Fig.04 is rear knock - out mechanism. Rear knock - out mechanism of various stations can be respectively and independently adjusted. Last station can. Before being kicked out, dead - point position of all models keeps the same. Some models can choose to add hand - wheel type or CNC type rear knock - out threaded pipe adjusting mechanism.



图05为 RBF 系列机型的冲具通出机构，可实现冲具通出与机器清块后识动作同步进行，使工件成形后停留在打模内由后通出机构通出，避免由冲具带出造成变形。前通出位置各工位可单验调整，所有前通出机构均设有通出力过载保护装置。
Fig.05 is punch knock - out mechanism of RBF serial model. Punch knock - out coincides with back action of machine slider. After the work - piece is shaped, it stays in the mould and then being kicked out by rear knock - out mechanism. It avoids being taken away by the punch and then get deformed. Various stations of front knock - out positions can be independently adjusted. All the front lead - out mechanism have knock - out force over - load protection devices.



图06为电动式送料机构，棘爪在回程中由气缸自动抬起与棘轮脱离，既可调除摩擦和噪音，又可防止棘轮反转。
Fig.06 is electric feeding mechanism. In return stroke, pawl can be automatically raised by air cylinder and be separated from ratchet wheel. It not only removes friction and noise, but also prevents ratchet wheel from reversal operation.

1、机械手夹送料采用旋转摆动方式，夹紧力采用气动，不但稳定还可根据不同产品调整压力避免夹伤产品。

Manipulator with rotary swing clip feed means and pneumatic force, it is not only stable but also can adjust the pressure according to different product to avoid crushing the products.

2、后顶出机构可单独调整，且前死点位置不变。

The rear knock out mechanism can be individually adjusted with front dead point in the same position.

3、送料机构采用棘爪轮式送料，动作稳定可靠，而且调节十分方便。

Feed system of ratchet pawl wheel is stable, reliable and convenient to adjust.

4、驱动机械横向运动由中间传动轴上的双凸轮实现，所以整机动作的协调性极易调节。

Cross movement of the machine driven by double -- cam above the shaft makes it easy to adjust the operating compatibility of the machine.

5、以各部位凸轮经电脑计算设计并由数控机床加工制造，可保证曲线圆滑和准确。

The cams in various positions are calculated and designed by computer, and then machined and manufactured by CNC machine tool to ensure smooth and precise curves.

6、侧板采用经淬火处理的进口高碳耐磨合金钢 SKS，使主滑台保持长期精度稳定性。

Side plates apply imported quenched high - carbon alloy steel SKS to maintain stable precision of main sliding table in long term.

7、配置 PLC 数控安全检出装置，可自动检测机器主要机构工作状态及故障显示。

A PLC controlled safety checking system can automatically detect the performance of key system and display of any abnormality.

8、配置进口变频器，可实现方便的机器生产速度无极调速。

Imported inverter is equipped for easy adjustment of stepless output speed.

9、可按用户要求选择配备"人机界面"的数控系统，可用于后通牙管定寸、挡料位置、送料长度的自动设定，大大缩短模具更换和调整时间，该系统可存储99个规格的产品调整参数，适用于快速换模的要求。

As an optional, CNC system of "man - machine interface" can be equipped to automatically adjust the dimension of rear knock - out threaded pipe, stop position and feeding length, greatly saves mould renewal and adjusting time. With a memory capacity of 99 digital modules, it is suitable for fast change over of moulds.

RBF 系列3工位高速全自动冷锻成型机主要技术参数

Main Technical Data of RBF Series 3- station High Speed and Fully Automatic Cold Heading and Forming Machine

型号 Model	单位 Unit	RBF-63S	RBF-83S	RBF-83L	RBF-103S	RBF-103L	RBF-133S	RBF-133L
工位数 Forging station	No.	3	3	3	3	3	3	3
成型力 Forging force	Kgs	38,000	65,000	65,000	85,000	85,000	120,000	120,000
最大剪断直径 Max cut-off dia.	mm	Φ8	Φ10	Φ10	Φ12	Φ12	Φ15	Φ15
最大剪断长度 Max cut-off length	mm	80	75	135	100	190	140	250
生产速度 Speed Range	pcs / min	160-260	140-240	110-180	120-200	85-140	100-160	60-100
动模顶出行程 P.K.O Stroke	mm	12	12	16	15	15	26	25
定模顶出行程 K.O Stroke	mm	65	50	115	80	160	100	230
主滑台行程 Main slide stroke	mm	110	106	193	150	280	200	350
主机功率 Main motor	kw	11	18.5	18.5	18.5	22	30	30
剪模外形尺寸 Cut-off-die size	mm	Φ30*45L	Φ53*56L	Φ30*50L	Φ45*59L	Φ45*59L	Φ63*69L	Φ55*70L
动模外形尺寸 Punch die size	mm	Φ40*90L	Φ45*95L	Φ45*140L	Φ53*115L	Φ53*112L	Φ60*130L	Φ60*179L
定模外形尺寸 Main die size	mm	Φ50*85L	Φ60*80L	Φ60*150L	Φ75*108L	Φ75*200L	Φ86*135L	Φ86*265L
模具间距 Die pitch	mm	60	70	70	90	90	98	110
机器大约重量 Machine Weight(Approx)	Kgs	8,000	11,000	14,000	14,000	20,000	23,000	32,000
可制螺丝直径 Normal bolt size	mm	3-6	5-8	5-8	6-10	6-10	8-12.7	8-12.7
可制螺丝头下长度 Shank length of blank	mm	10-65	15-55	25-105	15-70	30-150	20-100	70-210
机械尺寸 L×W×H Mechanical Dimensions(cm)	CM	380*212*147	420*220*173	455*235*208	410*250*180	570*240*230	455*260*196	780*260*270

备注:

REMARKS

1、本公司保留修改以上参数的权利，如有修改恕不另行通知；

The company keeps the right to revise above parameters. If there is any alterations, advance notice won't be given then.

2、产品最适用的生产速度取决于产品的形状、尺寸和材料；

The products' most applicable production speed is decided by the product shape, size and material.

3、表中所列最大材料剪断直径和制产品尺寸按中碳合金钢计算，相当于10.9级高强度螺丝，

Maximum material shearing diameter and product size listed in the table can be calculated according to medium carbon alloy steel. It is equal to 10.9 grade high intensity screw.



Specification 参数

RBF 系列4工位高速全自动冷镦成型机主要技术参数

Main Technical Data of RBF Series 4- station High Speed and Fully Automatic Cold Heading and Forming Machine

型号 Model	单位 Unit	RBF-44S	RBF-64S	RBF-64L	RBF-84S	RBF-104S	RBF-104L	RBF-134L
工位数 Forging station	No.	4	4	4	4	4	4	4
成型力 Forging force	Kgs	20,000	45,000	45,000	65,000	85,000	85,000	130,000
最大剪断直径 Max cut-off dia.	mm	Φ5	Φ8	Φ8	Φ10	Φ12	Φ12	Φ15
最大剪断长度 Max cut-off length	mm	55	90	125	100	130	185	190
生产速度 Speed Range	pcs/min	300	140-240	100-180	120-200	95-160	90-150	75-120
动模顶出行程 P.K.O Stroke	mm	10	12	20	19	20	30	30
定模顶出行程 K.O Stroke	mm	45	85	110	85	110	160	160
主滑台行程 Main slide stroke	mm	100	136	172	140	190	280	270
主电机功率 Main motor	kw	7.5	15	15	22	30	30	37
剪模外形尺寸 Cut-off-die size	mm	Φ20*30L	Φ30*45L	Φ30*45L	Φ35*50L	Φ45*59L	Φ45*59L	Φ63*69L
动模外形尺寸 Punch die size	mm	Φ32*60L	Φ40*90L	Φ45*110L	Φ45*115L	Φ53*115L	Φ53*115L	Φ60*130L
定模外形尺寸 Main die size	mm	Φ38*60L	Φ50*110L	Φ50*130L	Φ60*120L	Φ75*135L	Φ75*200L	Φ86*190L
模具间距 Die pitch	mm	48	60	60	80	94	94	110
机器大约重量 Machine Weight(Approx)	Kgs	45,00	10,000	12,000	14,000	18,000	24T	26,000
可制螺丝直径 Normal bolt size	mm	2-4	3-6	3-6	5-8	6-10	6-10	8-12.7
可制螺丝头下长度 Shank length of blank	mm	10-40	10-75	35-100	15-75	15-100	20-150	25-150
机械尺寸L×W×H Mechanical Dimensions(cm)	cm	250*150*125	400*203*169	440*200*165	430*230*185	450*250*195	570*277*219	500*277*219

备注:

REMARKS

1、本公司保留修改以上参数的权利，如有修改恕不另行通知；

The company keeps the right to revise above parameters. If there is any alterations, advance notice won't be given then.

2、产品最适用的生产速度取决于产品的形状，尺寸和材料；

The products' most applicable production speed is decided by the product shape, size and material.

3、表中列最大材料剪断直径和制产品尺寸按中碳合金钢计算，相当于10.9级高强度螺丝，

Maximum material shearing diameter and product size listed in the table can be calculated according to medium carbon alloy steel. It is equal to 10.9 grade high intensity screw.

RBF 系列4工位高速全自动冷镦成型机主要技术参数

Main Technical Data of RBF Series 4- station High Speed and Fully Automatic Cold Heading and Forming Machine

型号 Model	单位 Unit	RBF-134LL	RBF-164S	RBF-164LL	RBF-204L	RBF-204LL	RBF-254SL	RBF-254L
工位数 Forging station	No.	4	4	4	4	4	4	4
成型力 Forging force	Kgs	130,000	220,000	220,000	380,000	380,000	450,000	450,000
最大剪断直径 Max cut-off dia.	mm	Φ15	Φ18	Φ18	Φ23	Φ23	Φ26	Φ30
最大剪断长度 Max cut-off length	mm	285	195	325	240	360	255	320
生产速度 Speed Range	pcs/min	50-80	70-110	40-70	50-80	40-65	40-70	35-62
动模顶出行程 P.K.O Stroke	mm	30	30	45	45	46	35	46
定模顶出行程 K.O Stroke	mm	280	170	320	220	325	215	280
主滑台行程 Main slide stroke	mm	380	260	490	346	496	330	446
主电机功率 Main motor	kw	37	55	55	75	75	110	110
剪模外形尺寸 Cut-off-die size	mm	Φ55*70L	Φ60*90L	Φ64*100L	Φ75*120L	Φ75*120L	Φ80*130L	Φ99*150L
动模外形尺寸 Punch die size	mm	Φ60*229L	Φ75*185L	Φ75*185L	Φ90*215L	Φ90*215L	Φ120*270L	Φ120*270L
定模外形尺寸 Main die size	mm	Φ86*305L	Φ100*190L	Φ100*345L	Φ125*240L	Φ125*345L	Φ140*250L	Φ148*300L
模具间距 Die pitch	mm	110	120	120	140	140	160	160
机器大约重量 Machine Weight(Approx)	Kgs	38,000	40,000	60,000	62,000	76,000	103,000	120,000
可制螺丝直径 Normal bolt size	mm	8-12.7	10-16	10-16	12-20	12-20	14-25.4	16-25.4
可制螺丝头下长度 Shank length of blank	mm	75-260	20-150	100-300	25-200	100-300	35-200	60-260
机械尺寸L×W×H Mechanical Dimensions(cm)	cm	720*300*250	610*326*265	900*350*320	730*320*300	870*320*320	830*430*320	——

备注:

REMARKS

1、本公司保留修改以上参数的权利，如有修改恕不另行通知；

The company keeps the right to revise above parameters. If there is any alterations, advance notice won't be given then.

2、产品最适用的生产速度取决于产品的形状，尺寸和材料；

The products' most applicable production speed is decided by the product shape, size and material.

3、表中列最大材料剪断直径和制产品尺寸按中碳合金钢计算，相当于10.9级高强度螺丝。

Maximum material shearing diameter and product size listed in the table can be calculated according to medium carbon alloy steel. It is equal to 10.9 grade high intensity screw.



Specification 参数

RBF 系列5工位高速全自动冷镦成型机主要技术参数

Main Technical Data of RBF Series 5- station High Speed and Fully Automatic Cold Heading and Forming Machine

型号 Model	单位 Unit	RBF-65S	RBF-85S	RBF-105S	RBF-135L
工位数 Forging station	No.	5	5	5	5
成型力 Forging force	Kgs	43,000	85,000	98,000	145,000
最大剪断直径 Max cut-off dia.	mm	Φ8	Φ10	Φ12	Φ15
最大剪断长度 Max cut-off length	mm	95	100	133	185
生产速度 Speed Range	pcs/min	120-200	95-160	90-150	60-105
动模顶出行程 P.K.O Stroke	mm	15	26	20	30
定模顶出行程 K.O Stroke	mm	80	85	110	160
主滑台行程 Main slide stroke	mm	136	140	190	270
主电机功率 Main motor	kw	15	22	30	37
剪模外形尺寸 Cut-off-die size	mm	Φ30*45L	Φ35*62L	Φ45*59L	Φ63*69L
动模外形尺寸 Punch die size	mm	Φ40*90L	Φ45*115L	Φ53*115L	Φ60*130L
定模外形尺寸 Main die size	mm	Φ50*110L	Φ60*120L	Φ75*135L	Φ86*190L
模具间距 Die pitch	mm	60	80	94	110
机器大约重量 Machine Weight(Approx)	Kgs	11T	17,000	20T	32,000
可制螺丝直径 Normal bolt size	mm	3-6	5-8	6-10	8-12.7
可制螺丝头下长度 Shank length of blank	mm	10-75	15-75	15-100	20-150
机械尺寸L×W×H Mechanical Dimensions(cm)	cm	350*220*170	420*250*190	455*275*230	560*300*225

备注:

REMARKS

1、本公司保留修改以上参数的权利，如有修改恕不另行通知；

The company keeps the right to revise above parameters. If there is any alterations, advance notice won't be given then.

2、产品最适用的生产速度取决于产品的形状，尺寸和材料；

The products' most applicable production speed is decided by the product shape, size and materia.

3、表中所列最大材料剪断直径和制产品尺寸按中碳合金钢计算，相当于10.9级高强度螺丝。

Maximum material shearing diameter and product size listed in the table can be calculated according to medium carbon alloy steel. It is equal to 10.9 grade high intensity screw.

RBF 系列5工位高速全自动冷镦成型机主要技术参数

Main Technical Data of RBF Series 5- station High Speed and Fully Automatic Cold Heading and Forming Machine

型号 Model	单位 Unit	RBF-165S	RBF-205L	RBF-255L	RBF-255LL	RBF-305L
工位数 Forging station	No.	5	5	5	5	5
成型力 Forging force	Kgs	236,000	380,000	480,000	480,000	600,000
最大剪断直径 Max cut-off dia.	mm	Φ18	Φ23	Φ30	Φ32	Φ36
最大剪断长度 Max cut-off length	mm	190	240	370	450	420
生产速度 Speed Range	pcs/min	55-95	45-75	35-55	30-50	25-45
动模顶出行程 P.K.O Stroke	mm	30	45	45	60	60
定模顶出行程 K.O Stroke	mm	165	220	315	400	380
主滑台行程 Main slide stroke	mm	274	346	500	620	580
主电机功率 Main motor	kw	55	75	110	110	132
剪模外形尺寸 Cut-off-die size	mm	Φ75*100L	Φ75*120L	Φ99*150L	Φ99*150L	Φ118*150L
动模外形尺寸 Punch die size	mm	Φ75*185L	Φ90*215L	Φ120*270L	Φ120*270L	Φ140*300L
定模外形尺寸 Main die size	mm	Φ108*200L	Φ125*240L	Φ148*355L	Φ148*450L	Φ168*420L
模具间距 Die pitch	mm	129	140	160	160	180
机器大约重量 Machine Weight(Approx)	Kgs	52,000	72,000	130,000	160,000	200,000
可制螺丝直径 Normal bolt size	mm	10-16	12-20	16-25.4	16-25.4	24-30
可制螺丝头下长度 Shank length of blank	mm	20-150	25-200	60-300	120-400	100-350
机械尺寸L×W×H Mechanical Dimensions(cm)	cm	600*317*272.5	830*430*320	935*460*339.5	1200*470*500	1100*490*480

备注:

REMARKS

1、本公司保留修改以上参数的权利，如有修改恕不另行通知；

The company keeps the right to revise above parameters. If there is any alterations, advance notice won't be given then.

2、产品最适用的生产速度取决于产品的形状，尺寸和材料；

The products' most applicable production speed is decided by the product shape, size and material.

3、表中所列最大材料剪断直径和制产品尺寸按中碳合金钢计算，相当于10.9级高强度螺丝。

Maximum material shearing diameter and product size listed in the table can be calculated according to medium carbon alloy steel. It is equal to 10.9 grade high intensity screw.

RBF 系列6工位高速全自动冷镦成型机主要技术参数

Main Technical Data of RBF Series 6-station High Speed and Fully Automatic Cold Heading and Forming Machine

型 号 Model	单位 Unit	RBF-46S	RBF-66S	RBF-86S	RBF-106S	RBF-136S	RBF-136L
工位数 Forging station	No.	6	6	6	6	6	6
成型力 Forging force	Kgs	24,000	50,000	90,000	110,000	140,000	140,000
最大剪断直径 Max cut-off dia.	mm	Φ7	Φ10	Φ13	Φ16	Φ18	Φ18
最大剪断长度 Max cut-off length	mm	66	100	100	133	140	185
生产速度 Speed Range	pcs/min	125-210	110-180	90-150	85-140	65-105	60-100
动模顶出行程 P.K.O Stroke	mm	10	26	26	26	26	30
定模顶出行程 K.O Stroke	mm	51	85	85	110	110	160
主滑台行程 Main slide stroke	mm	114	140	140	190	206	270
主电机功率 Main motor	kw	7.5	15	22	30	45	45
剪模外形尺寸 Cut-off-die size	mm	Φ24*35L	Φ35*45L	Φ42*60L	Φ52*75L	Φ58*80L	Φ58*80L
动模外形尺寸 Punch die size	mm	Φ31*65L	Φ40*90L	Φ45*115L	Φ53*115L	Φ60*130L	Φ60*130L
定模外形尺寸 Main die size	mm	Φ38*85L	Φ50*120L	Φ60*120L	Φ75*135L	Φ94*135L	Φ94*190L
模具间距 Die pitch	mm	46	64	80	94	110	110
机器大约重量 Machine Weight(Approx)	Kgs	9,000	16,000	20,000	24,000	31,000	35,000
可制螺丝直径 Normal bolt size	mm	2-4	3-6	5-8	6-10	8-12.7	8-12.7
可制螺丝头下长度 Shank length of blank	mm	6-50	15-75	15-77	15-102	20-100	20-150

备注:

REMARKS

- 1、本公司保留修改以上参数的权利，如有修改恕不另行通知；
The company keeps the right to revise above parameters. If there is any alterations, advance notice won't be given then.
- 2、产品最适用的生产速度取决于产品的形状、尺寸和材料；
The products' most applicable production speed is decided by the product shape, size and material.
- 3、表中所列最大材料剪断直径和制产品尺寸按中碳合金钢计算，相当于10.9级高强度螺丝。
Maximum material shearing diameter and product size listed in the table can be calculated according to medium carbon alloy steel. It is equal to 10.9 grade high intensity screw.

RBF 系列6工位高速全自动冷镦成型机主要技术参数

Main Technical Data of RBF Series 6-station High Speed and Fully Automatic Cold Heading and Forming Machine

型 号 Model	单位 Unit	RBF-136LL	RBF-166S	RBF-206S	RBF-206L	RBF-256S	RBF-276S
工位数 Forging station	No.	6	6	6	6	6	6
成型力 Forging force	Kgs	140,000	230,000	390,000	390,000	500,000	730,000
最大剪断直径 Max cut-off dia.	mm	Φ18	Φ23	Φ30	Φ30	Φ34	Φ41
最大剪断长度 Max cut-off length	mm	240	190	195	240	320	320
生产速度 Speed Range	pcs/min	55-90	55-95	50-80	40-70	40-60	30-50
动模顶出行程 P.K.O Stroke	mm	40	35	46	45	50	50
定模顶出行程 K.O Stroke	mm	210	165	180	220	280	280
主滑台行程 Main slide stroke	mm	320	280	280	346	446	450
主电机功率 Main motor	kw	45	75	90	90	132	200
剪模外形尺寸 Cut-off-die size	mm	Φ58*80L	Φ74*105L	Φ94*130L	Φ94*130L	Φ109*150L	Φ129*180L
动模外形尺寸 Punch die size	mm	Φ60*130L	Φ75*185L	Φ90*215L	Φ90*215L	Φ120*270L	Φ180*270L
定模外形尺寸 Main die size	mm	Φ94*240L	Φ108*200L	Φ125*200L	Φ125*240L	Φ148*300L	Φ178*300L
模具间距 Die pitch	mm	110	129	140	140	160	190
机器大约重量 Machine Weight(Approx)	Kgs	42,000	56,000	80,000	80,000	135,000	170,000
可制螺丝直径 Normal bolt size	mm	8-12.7	10-16	12-20	12-20	16-25.5	20-28.5
可制螺丝头下长度 Shank length of blank	mm	20-200	25-152	25-160	25-200	50-250	50-250

备注:

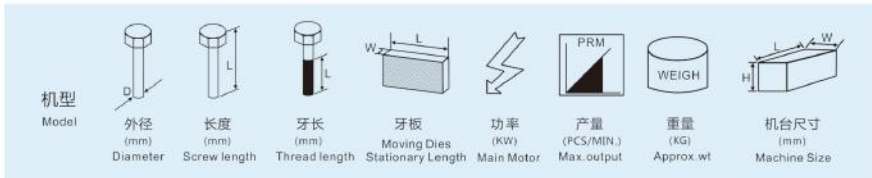
REMARKS

- 1、本公司保留修改以上参数的权利，如有修改恕不另行通知；
The company keeps the right to revise above parameters. If there is any alterations, advance notice won't be given then.
- 2、产品最适用的生产速度取决于产品的形状、尺寸和材料；
The products' most applicable production speed is decided by the product shape, size and material.
- 3、表中所列最大材料剪断直径和制产品尺寸按中碳合金钢计算，相当于10.9级高强度螺丝。
Maximum material shearing diameter and product size listed in the table can be calculated according to medium carbon alloy steel. It is equal to 10.9 grade high intensity screw.

Thread Rolling Machine 搓丝机

搓丝机参数

/ THREAD ROLLING MACHINE PARAMETERS



CY90° Feeding (GEAR IN OUTSIDE) 《CY 系列可配合买方尺寸, 更改90°牙板》

Model	外径 (mm)	长度 (mm)	牙长 (mm)	牙板 Moving Dies Stationary Length	功率 (KW)	产量 (PCS/MIN.)	重量 (KG)	机台尺寸 (mm)
1 CY05Z	3-5	50/75	50	76/89/25	2.2	90-120	1000	1600×1300×1650
2 CY06Z	3-6	50/75	75	90/105/25	4	160-185	1500	1800×1500×1700
3 CY08Z	4-8	100	75	108/127/25	5.5	145-165	1900	2000×1600×1700
4 CY10Z	6-10	150/200/300	100	150/165/25	11	85-120	3670	2896×1216×2180
5 CY12Z	8-12	150/200/300	100	190/215/35	15	65-85	5600	3265×1524×2345
6 CY16Z	12-16	150/200/300	100	230/265/38	22	45-60	6700	3500×1900×2200
7 CY20Z	14-20	200/300	150	290/330/50	37	40-50	14000	2200×4700×2200
8 CY24Z	16-24	200/300	150	380/420/50	45	35-45	18300	5100×2320×2600
9 CY30Z	20-30	250/300	150	450/500/50	55	20-30	22330	5600×2500×2850
10 CY02X	1-3	25	20	51/64/19	1.5	275-325	830	1150×1000×1680
11 CY05X	2-5	40	32	76/89/25	2.2	230-280	1040	1560×1180×1790
12 CY06XN	3-6	75	75	90/105/25	5.5	280-400	2800	2150×1250×2000
13 CY06X	3-6	50/75	50	90/105/25	4	170-200	1900	2140×1180×2100
14 CY06XT	3-6	75	75	90/105/25	4	170-200	1900	1900×1500×1600
15 CY08X	4-8	75	50	108/127/25	5.5	180-200	2215	2410×1180×2100
16 CY10X	6-10	100/150	65	150/165/25	15	130-160	4530	3800×1800×1970
17 CY12X	8-12	100/150	75	190/215/35	22	110-140	5300	3300×1530×1982
18 CY16X	12-18	150	80	230/265/38	30	75-120	7600	3720×1800×2620
19 CY20X	14-20	150	80	290/330/50	37.5	73-85	14000	3024×1824×2300

注：以上技术参数为生产机牙及碳钢1022以下产品的基准，需生产不锈钢或特殊高强度产品，建议加大设备或与本公司业务确认。本公司随时进行研究改进的工作，因此保有随时更改设计、规格尺寸及机械结构之权利，本目录之规格仅供参考。

Note: The above parameters are based on the production of carbon steel 1022. If you need to produce stainless steel or special high-strength products, it is suggested to increase the equipment model or confirm with our company. Our company reserves the right to change the design, specifications and mechanical structure at any time to carry out research and improvement work. This catalog specification is for reference only.

搓丝机部分结构

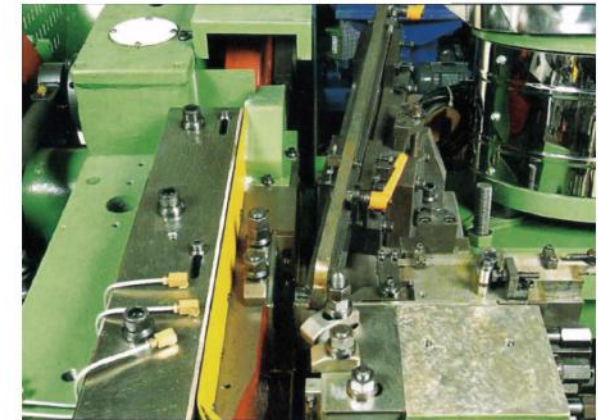
/ THREAD ROLLING MACHINE PART OF THE STRUCTURE



斜送送料方式

素材进料与中仁成30°

Transportation Material
Sloping filling -30 degree obliquity
with main slider



直送送料方式

素材进料与中仁成90°

Transportation Material
Sloping filling -90 degree obliquity with main slider

Nut/Spare Part Forging Machine 螺母机/零件成型机

六模加长轴承式 高速螺母，零件成型冷锻机 Six Die Extra Long Bearing Type High Speed Nut and Spare Part Forging Machine



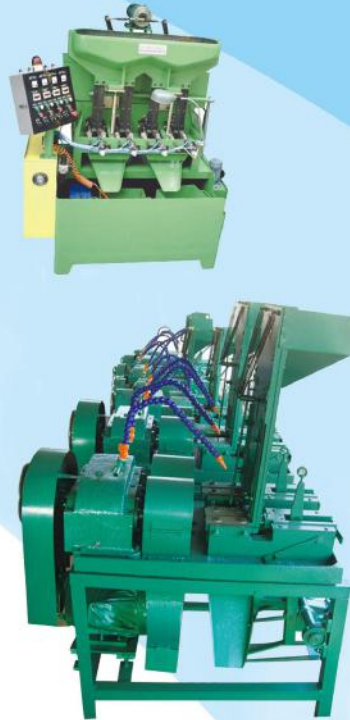
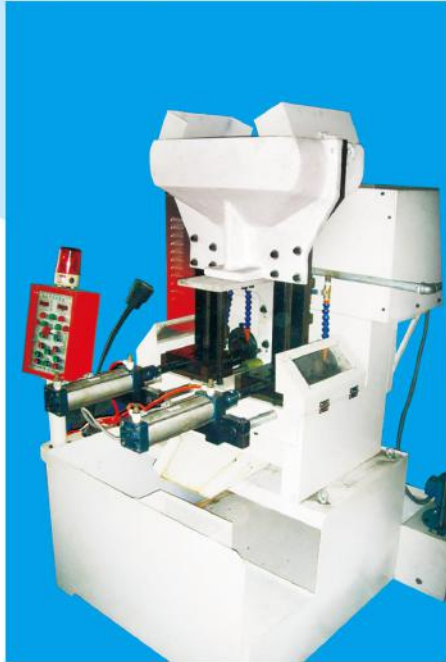
六模七模加长轴承式 高速螺母，零件成型冷锻机 Six Die Seven Die Extra Long Bearing Type High Speed Nut and Spare Part Forging Machine



MODEL	FORGING STATION	MAX. FORGING DIA.(mm)	CUT-OFF DIA.(mm)	PRODUCT SIZE	FORGING LENGTH (mm)	DIE PITCH (mm)	SLIDER STROKE (mm)	OUTPUT (per.min.)	MAIN MOTOR (HP)	WEIGHT (T)	DIMENSION (cm)
RNF08B-6S-12	6	8	8	M4-M5	12	38	40	175/350	10	3.5	195×135×130
RNF11B-6S-14	6	11	10	M5-M6	14	50	60	120/240	15	4.3	230×155×135
RNF11B-6SL-20	6	11	10	M5-M6	20	50	65	110/200	20	4.5	230×155×135
RNF11B-6SL-35	6	11	10	M5-M6	35	50	125	110	20	4.5	230×155×135
RNF14B-6S-18	6	15	14	M6-M8	18	60	70	75/160	20	8	300×195×175
RNF14B-6SL-30	6	15	14	M6-M8	30	60	100	85/160	30	8	300×198×175
RNF14B-6SL-50	6	15	14	M6-M8	50	60	160	85	30	8.5	300×198×175
RNF17B-6S-20	6	17	17	M8-M10	20	70	80	65/130	20	10	350×220×185
RNF17B-6SL-50	6	17	17	M8-M10	50	70	160	80	40	10.5	360×220×185
RNF17B-6SL-70	6	17	17	M8-M10	70	70	220	80	50	10.5	360×220×185
RNF19B-6S-25	6	20	19	M10-M12	25	80	95	95	40	10.5	360×220×185
RNF19B-6SL-50	6	20	19	M10-M12	50	80	160	75	50	16	380×245×196
RNF19B-6SL-70	6	20	19	M10-M12	70	80	220	65	60	16	380×235×196
RNF22B-6S-30	6	22	22	M12-M14	30	80	160	80	60	18	380×235×196
RNF22B-6SL-60	6	22	22	M12-M14	60	80	220	75	60	18	380×235×196
RNF24B-6S-35	6	24	24	M14-M16	35	100	160	75	75	27.5	550×248×270
RNF24B-6SL-70	6	24	24	M14-M16	70	100	210	65	75	27.5	550×248×270
RNF27B-6S-40	6	27	29	M16-M18	35	100	160	75	100	30	550×248×270
RNF27B-6SL-70	6	27	29	M16-M18	70	100	210	65	150	30	550×248×270
RNF30B-6S-40	6	30	28	M16-M20	40	120	150	60-90	100	40	550×280×200
RNF30B-6SL-80	6	32	28	M16-M20	80	120	200	50-65	125	45	650×280×200
RNF33B-6S-40	6	33	30	M18-M22	40	140	150	60-80	125	55	600×300×200
RNF33B-6SL-80	6	33	30	M18-M20	80	140	280	60	200	50	650×300×280
RNF36B-6S-45	6	35	32	M18-M24	45	150	160	60-80	125	60	650×300×200
RNF36B-6SL-100	6	35	32	M18-M24	100	150	260	50-60	150	70	750×300×240
RNF41B-6S-50	6	40	40	M20-M27	50	165	200	55-70	150	68	700×350×240
RNF41B-6SL-100	6	40	40	M20-M27	100	165	260	50-60	200	80	750×350×280
RNF45B-6S-55	6	45	42	M20-M30	50	180	210	50-60	180	85	750×300×280
RNF45B-6SL-100	6	45	42	M20-M30	100	180	260	50-60	270	100	800×350×300

2/4 Spindle Nut Tapping Machine 攻丝机

2 Spindle Flange & Hex Nut Tapping Machine



4 Spindle Flange & Hex Nut Tapping Machine



Specification 参数

Model	Size	No. of Spindle	Productivity (pcs/min.)		Main Motor (kw)	Motor of Material Mixing (kw)	Oil Pump (kw)	Air Pressure (kg/cm)	Dimension (LxWxH/mm)	Weight (kg)
			Flange	Hex						
LDH-M4-2	M3	2	80	100	0.75-4	0.55	0.125	1.5-2.5	1100×1100×1800	450
	M4	2	80	100						
LDH-M8-2	M5	2	70	100	0.75-4	0.55	0.125	2-3	1100×1100×1800	450
	M6	2	65	90						
	M8	2	60	80						500
LDH-M12-2	M10	2	50	70	1.5-4	0.55	0.125	3-4	1100×1100×1800	500
	M12	2	45	60						
LDH-M16-2	M14	2	40	50	2.2-6	0.55	0.125	3-5	1100×1100×1800	550
	M16	2	30	40						

All specifications are subject to changes without prior notice

Specification 参数

Model	Size	No. of Spindle	Productivity (pcs/min.)		Main Motor (kw)	Motor of Material Mixing (kw)	Oil Pump (kw)	Air Pressure (kg/cm)	Dimension (LxWxH/mm)	Weight (kg)
			Flange	Hex						
LDH-M8-4	M5	4	140	200	0.75-4	0.55	0.25	2-3	1450×1600×1800	1110
	M6	4	130	180						
	M8	4	120	160						
LDH-M12-4	M10	4	100	140	1.5-4	0.55	0.25	3-4	1500×1900×1750	1160
	M12	4	90	120						
LDH-M16-4	M14	4	80	100	1.5-8	0.75	0.25	4-5	1700×2000×1800	1280
	M16	4	60	80						
LDH-M20-4	M18	4	50	70	2.2-8	1.50	0.25	4-6	1750×1750×1850	1400
	M20	4	40	60						
LDH-M24-4	M22	4	30	50	3-8	1.50	0.25	4-6	1750×2100×1850	1400
	M24	4	25	40						
LDH-M30-4	M27	4	20	32	3-8	1.10	0.25	4-7	1750×2100×1850	1400
	M30	4	16	28						

All specifications are subject to changes without prior notice

Spring Washer Machine 弹簧垫圈机



18-22mm Cutting Machine



3-5mm Cutting Machine



10-12mm Cutting Machine



24-30mm Cutting Machine



14-16mm Cutting Machine



Belt Wire Drawing Machine



160mm, 200mm Die for Belt Wire Drawing



Belt Wire Drawing Machine



3-6mm Rolling up Machine



12-16mm, 18-22mm Rolling up Machine



37kw Washer Tempering Furnace



3-5mm, 6mm, 8-10mm Coil Collection Machine



12-16mm, 18-22mm, 24-30mm Coil Collection Machine

TECHNICAL SPECIFICATION

Item	Specification	Speed rpm	Dimension(L*W*H)mm	Weight/kg
Belt Wire Drawing Machine	Reel dia.:550			
	Reel dia.:350			
Coil machine	3-5mm(inner dia of final product)	1080	1380*600*950	400
	6mm(inner dia of final product)	1080	1600*650*950	450
	8-10mm(inner dia of final product)	720	1800*750*1350	750
	12-16mm(inner dia of final product)	518	1800*750*1350	1000
	18-22mm(inner dia of final product)	392	2000*1450*900	1200
	24-30mm(inner dia of final product)	262	2200*1000*1500	1600
Coil collection machine	Above 33mm(inner dia of final product)	150	2600*1100*1780	2000
	Below 12mm(inner dia of final product)			
Cutting machine	12-22mm(inner dia of final product)			
	3-5mm(inner dia of final product)	530	850*700*1250	300
	6-8mm(inner dia of final product)	368	1200*750*1350	450
	10-12mm(inner dia of final product)	296	1450*850*1500	600
	14-16mm(inner dia of final product)	213	1550*950*1580	1000
	18-20mm(inner dia of final product)	150	1650*1000*1600	1300
	22-30mm(inner dia of final product)	120	1850*1200*1600	1500
Above 33mm(inner dia of final product)	70	2000*1500*2800	3000	
Mould(round wire to belt wire) material Cr12Movz	150mm			
	20mm			
	150mm mould sheet			
	200mm mould sheet			

All specifications are subject to changes without prior notice

1- DIE 2- BLOW COLD HEADING MACHINE SERIES 一模二冲冷镦机系列



RSH4-40



RSH6-150

设备介绍 Mechanical Introduction

◆ 该机械是一模二冲冷镦机，它是专业生产各类普通螺丝产品，此类机器具有速度快、精度高、通用广泛、成本低、效率高等优势。

◆ This machine is a 1- die 2- blow cold heading machine, which is specialized in producing all kinds of ordinary screw products. This machine has the advantages of high speed, accurate precision, wide versatility, low cost and high efficiency.



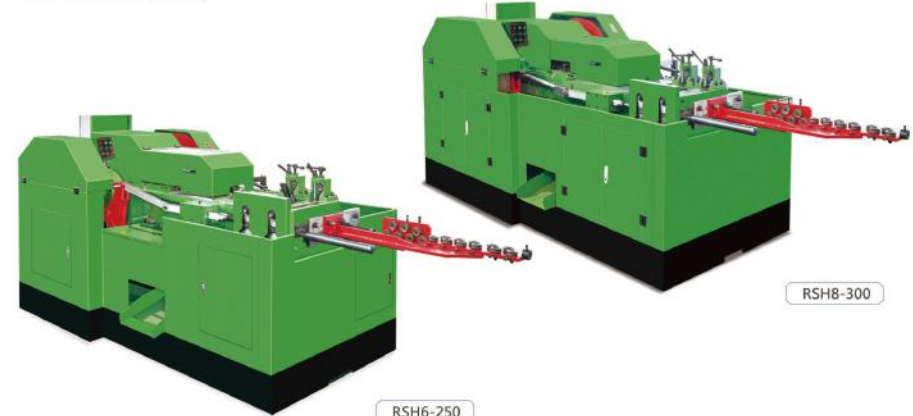
生产样品 PRODUCTION SAMPLE

设备参数 Mechanical Parameters

机型 Model	最大可制外径 Max. Blank Diameter /mm	最大可制长度 Max. Blank Length /mm	最大切削长度 Max. Cut-off Length /mm	滑台行程 Stroke /mm	每分钟产量 Capacity /pcs/min	主模尺寸 Main Die Diameter /mm	初冲尺寸 The Initial Punch Die Diameter /mm	精冲尺寸 The Precise Punch Die Diameter /mm	剪模尺寸 Cut-off Die Diameter /mm	剪刀尺寸 Cutter Size /mm	主电机 Main Motor Power /kw	体积 Volume(L*W*H) /m	重量 Weight /kg
RSH3-20	3	20	30	37	150-200	Φ20×35	Φ18×50	Φ18×50	Φ13×25	6×25×42	1.5HP/1.1KW	1.40×0.75×0.90	650
RSH4-40	4	40	48	68	150-180	Φ30×60	Φ25×65	Φ25×65	Φ15×30	10×32×72	4.0HP/3.0KW	1.80×0.85×1.15	1200
RSH4-30G	4	30	48	68	180-200	Φ30×50	Φ25×65	Φ25×65	Φ15×30	10×32×72	4.0HP/3.0KW	1.80×0.85×1.15	1300
RSH5-30G	5	30	55	82	160-180	Φ34.5×56	Φ35×75	Φ31×75	Φ19×35	10×35×72	4.0HP/3.0KW	1.80×1.00×1.25	2000
RSH5-50G	5	50	75	92	160-180	Φ34.5×68	Φ35×75	Φ31×75	Φ19×35	10×35×72	4.0HP/3.0KW	1.80×1.00×1.25	2100
RSH5-60	5	60	80	92	120-140	Φ34.5×80	Φ31×75	Φ31×75	Φ19×35	10×35×72	4.0HP/3.0KW	2.30×1.08×1.25	1800
RSH5-80	5	80	95	110	90-110	Φ34.5×100	Φ31×75	Φ31×75	Φ19×35	10×35×72	4.0HP/3.0KW	2.40×1.15×1.25	1850
RSH5-100	5	100	120	130	80-100	Φ35×120	Φ30×80	Φ30×80	Φ20×35	10×35×72	4.0HP/3.0KW	2.50×1.15×1.35	2200
RSH5-150	5	150	168	190	60-80	Φ40×180	Φ35×100	Φ35×100	Φ20×35	10×35×72	4.0HP/3.0KW	2.60×1.15×1.35	3000
RSH6-70	6	70	110	90	90-100	Φ50×120	Φ35×120	Φ35×120	Φ24×40	12×35×77	7.5HP/5.5KW	2.50×1.40×1.60	3300
RSH6-90	6	90	110	120	80-90	Φ50×120	Φ35×120	Φ35×120	Φ24×40	12×35×77	7.5HP/5.5KW	2.70×1.40×1.60	3300
RSH6-120	6	120	140	150	70-80	Φ50×150	Φ35×120	Φ35×120	Φ24×40	12×35×77	7.5HP/5.5KW	2.80×1.40×1.60	3600
RSH6-150	6	150	170	190	60-70	Φ50×180	Φ35×160	Φ35×160	Φ24×55	12×35×77	7.5HP/5.5KW	3.00×1.40×1.60	4200
RSH6-170	6	170	190	230	50-60	Φ50×220	Φ35×120	Φ35×130	Φ24×55	12×35×77	7.5HP/5.5KW	3.20×1.40×1.60	4200
RSH6-200	6	200	220	240	40-50	Φ50×240	Φ35×120	Φ35×130	Φ24×60	12×35×77	7.5HP/5.5KW	3.65×1.40×1.45	4900
RSH6-250	6	250	270	310	30-45	Φ50×285	Φ35×140	Φ35×130	Φ24×60	12×35×77	7.5HP/5.5KW	3.70×1.50×1.70	5400

All specifications are subject to changes without prior notice

1- DIE 2- BLOW COLD HEADING MACHINE SERIES 一模二冲冷镦机系列



RSH6-250

RSH8-300

设备介绍 Mechanical Introduction

◆ 该机械是一模二冲冷镦机，它是专业生产各类普通螺丝产品，此类机器具有速度快、精度高、通用广泛、成本低、效率高等优势。

◆ This machine is a 1- die 2- blow cold heading machine, which is specialized in producing all kinds of ordinary screw products. This machine has the advantages of high speed, accurate precision, wide versatility, low cost and high efficiency.



生产样品 PRODUCTION SAMPLE

设备参数 Mechanical Parameters

机型 Model	最大可制外径 Max. Blank Diameter /mm	最大可制长度 Max. Blank Length /mm	最大切削长度 Max. Cut-off Length /mm	滑台行程 Stroke /mm	每分钟产量 Capacity /pcs/min	主模尺寸 Main Die Diameter /mm	初冲尺寸 The Initial Punch Die Diameter /mm	精冲尺寸 The Precise Punch Die Diameter /mm	剪模尺寸 Cut-off Die Diameter /mm	剪刀尺寸 Cutter Size /mm	主电机 Main Motor Power /kw	体积 Volume(L*W*H) /m	重量 Weight /kg
RSH8-90	8	90	120	130	80-90	Φ60×120	Φ40×120	Φ40×120	Φ28×45	12×42×90	10HP/7.5KW	3.60×1.60×1.80	4800
RSH8-120	8	120	140	156	60-80	Φ60×160	Φ40×120	Φ40×120	Φ28×45	12×42×90	10HP/7.5KW	3.75×1.60×1.80	4900
RSH8-150	8	150	180	190	60-70	Φ60×190	Φ40×120	Φ40×120	Φ28×45	12×42×90	10HP/7.5KW	3.90×1.60×1.80	6200
RSH8-200	8	200	220	250	40-50	Φ60×240	Φ40×150	Φ40×150	Φ28×60	12×42×90	10HP/7.5KW	4.15×1.60×1.85	6500
RSH8-250	8	250	270	290	30-45	Φ60×290	Φ40×150	Φ40×150	Φ28×60	12×42×90	10HP/7.5KW	4.30×1.60×1.90	7800
RSH8-300	8	300	330	365	25-35	Φ60×360	Φ40×180	Φ40×180	Φ28×60	12×42×90	10HP/7.5KW	4.30×1.60×1.90	8500
RSH10-120	10	120	140	150	50-60	Φ80×160	Φ55×150	Φ55×150	Φ40×50	16×55×115	15HP/11KW	4.80×1.80×1.70	8450
RSH10-150	10	150	180	210	45-55	Φ80×190	Φ55×150	Φ55×150	Φ40×50	16×55×115	15HP/11KW	3.90×1.80×1.70	8800
RSH10-220	10	220	240	260	40-50	Φ80×260	Φ55×150	Φ55×150	Φ40×50	16×55×115	15HP/11KW	5.00×1.80×1.70	9100
RSH10-260	10	260	280	300	30-40	Φ80×290	Φ55×150	Φ55×150	Φ40×60	16×55×115	15HP/11KW	5.15×1.80×1.70	10200
RSH10-300	10	300	320	350	25-35	Φ80×360	Φ55×180	Φ55×180	Φ40×50	16×55×115	15HP/11KW	5.50×1.80×2.00	11800

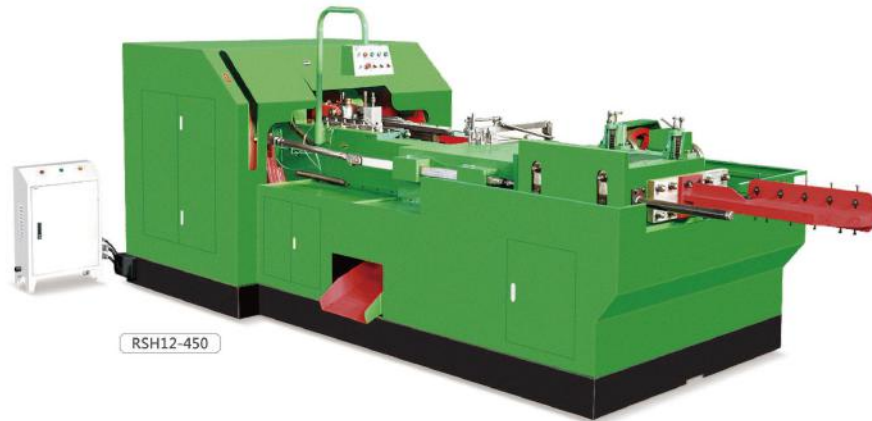
All specifications are subject to changes without prior notice

Heading Machine 打头机

1-DIE 2-BLOW SUPER LONG STROKE

LARGE SIZE COLD HEADING MACHINE SERIES

一模二冲超长大型冷锻机系列



RSH12-450

SEMI-TUBULAR RIVET

COLD HEADING MACHINE SERIES

尾孔打头机（半空心铆钉机）系列



RSR4-40



RSR5-60

设备介绍 Mechanical Introduction

◆该机械是一模二冲冷锻机，它是专业生产各类普通螺丝产品，此类机器具有速度快、精度高、通用广泛、成本低、效率高等优势。

◆This machine is a 1- die 2- blow cold heading machine, which is specialized in producing all kinds of ordinary screw products. This machine has the advantages of high speed, accurate precision, wide versatility, low cost and high efficiency.



设备参数 Mechanical Parameters

机型 Model	最大可制外径 Max. Blank Diameter /mm	最大可制长度 Max. Blank Length /mm	最大切料长度 Max. Cut-off Length /mm	滑台行程 Stroke /mm	每分钟产量 Capacity /pcs/min	主模尺寸 Main Die Diameter /mm	初冲尺寸 The Initial Punch Die Diameter /mm	精冲尺寸 The Precise Punch Die Diameter /mm	剪模尺寸 Cut-off Die Diameter /mm	剪刀尺寸 Cutter Size /mm	主电机 Main Motor Power /kw	体积 Volume(L*W*H) /m	重量 Weight /kg
RSH12-70	12	70	90	120	60-70	Φ60×120	Φ55×120	Φ55×120	Φ35×45	16×50×125	20HP/15KW	4.50×2.00×1.32	8700
RSH12-150	12	150	170	190	40-50	Φ60×200	Φ60×180	Φ60×180	Φ45×60	18×60×125	25HP/18.5KW	5.20×1.90×1.80	14000
RSH12-200	12	200	220	250	30-40	Φ68×260	Φ60×180	Φ60×180	Φ45×60	18×60×125	25HP/18.5KW	5.20×1.90×1.80	14300
RSH12-250	12	250	270	300	30-40	Φ68×330	Φ60×180	Φ60×180	Φ45×60	18×60×125	25HP/18.5KW	5.20×1.90×1.80	15000
RSH12-300	12	300	320	330	25-35	Φ68×360	Φ60×180	Φ60×180	Φ45×60	18×60×125	25HP/18.5KW	5.20×1.90×1.80	15850
RSH12-450	12	450	480	550	25-35	Φ60×540	Φ60×270	Φ60×270	Φ45×60	18×60×125	25HP/22KW	6.50×2.25×2.10	20800
RSH16-180	16	180	210	240	35-40	Φ98×220	Φ65×180	Φ65×180	Φ60×80	20×60×125	25HP/22KW	4.40×2.10×1.95	20800
RSH16-450	16	450	480	550	25-35	Φ98×540	Φ60×270	Φ60×270	Φ60×80	20×70×125	25HP/22KW	6.50×2.25×2.10	21000

All specifications are subject to changes without prior notice

设备介绍 Mechanical Introduction

◆该机械专门生产半空心铆钉成型产品，具有最新款勾料装置。

◆This machine specializes in the production of semi-tubular rivet with the latest material hooking system.

◆The machine has the advantages of fast production speed, small error and high precision, convenient operation and low maintenance rate.



设备参数 Mechanical Parameters

机型 Model	最大可制外径 Max. Blank Diameter /mm	最大可制长度 Max. Blank Length /mm	最大切料长度 Max. Cut-off Length /mm	滑台行程 Stroke /mm	每分钟产量 Capacity /pcs/min	主模尺寸 Main Die Diameter /mm	初冲尺寸 The Initial Punch Die Diameter /mm	精冲尺寸 The Precise Punch Die Diameter /mm	剪模尺寸 Cut-off Die Diameter /mm	剪刀尺寸 Cutter Size /mm	主电机 Main Motor Power /kw	体积 Volume(L*W*H) /m	重量 Weight /kg
RSR3-20	Φ3	20	30	37	100-120	Φ20×35	Φ18×50	Φ18×50	Φ13×20	6×25×42	1.5HP/1.1KW	1.40×0.75×0.90	650
RSR4-40	Φ4	40	48	68	90-100	Φ32×58	Φ25×65	Φ25×65	Φ15×30	9×32×70	2HP/1.5KW	2.00×0.85×1.15	1100
RSR5-60	Φ5	60	75	92	70-90	Φ34.5×98	Φ31×75	Φ31×75	Φ19×35	9×35×72	3HP/2.2KW	2.40×1.10×1.25	2100
RSR5-80	Φ5	80	95	102	70-90	Φ34.5×100	Φ31×75	Φ31×75	Φ19×35	9×35×72	3HP/2.2KW	2.40×1.10×1.25	2300
RSR6-90	Φ6	90	110	120	60-80	Φ45×120	Φ35×100	Φ35×100	Φ24×40	12×35×77	5.5HP/4.0KW	2.70×1.40×1.60	3600
RSR6-120	Φ6	120	140	150	60-80	Φ45×150	Φ35×100	Φ35×100	Φ24×40	12×35×77	5.5HP/4.0KW	3.10×1.40×1.60	3900
RSR8-120	Φ8	120	140	156	50-70	Φ55×160	Φ40×120	Φ40×120	Φ28×45	12×42×90	10HP/7.5KW	3.70×1.60×1.80	4200
RSR10-120	Φ10	120	140	150	50-60	Φ70×160	Φ55×150	Φ55×150	Φ35×50	16×55×115	15HP/11KW	4.80×1.80×1.70	6000

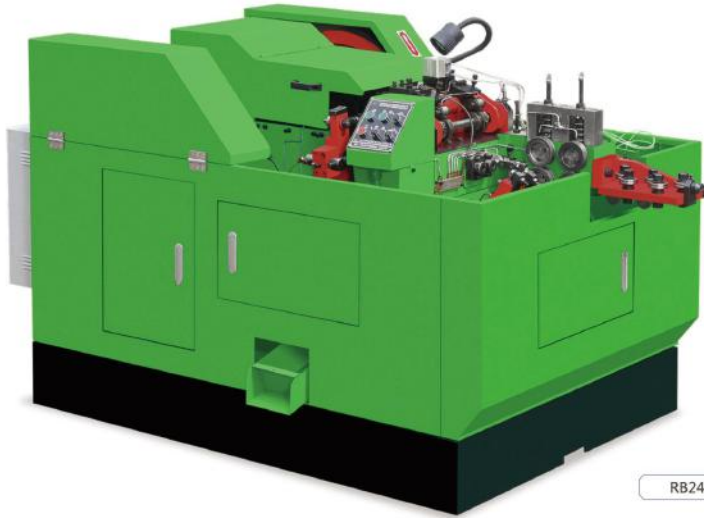
All specifications are subject to changes without prior notice

Heading Machine 打头机

2- DIE 4- BLOW

COLD HEADING MACHINE SERIES

二模四冲冷镦机系列



RB2415

设备介绍 Mechanical Introduction

- ◆ 本公司拥有不同型号的多工位成型机器，此系列产品主要用于多台阶、高难度螺钉产品。
- ◆ 此系列机器按照台湾螺丝机械的结构设计。
- ◆ 机器主要采用台湾进口材料，具有耐磨、性能好、生产稳定等特点。

- ◆ The company has different types of multi - station cold forging machines, these machine series are mainly used for multi - step or difficult fasteners.
- ◆ These machine series are designed according to the structure of Taiwan Machinery.
- ◆ The machine is mainly made of materials imported from Taiwan, which has the characteristics of wear resistance, good performance and stable production.



设备参数 Mechanical Parameters

机型 Model	最大可制外径 Max.Blank Diameter /mm	最大可制长度 Max.Blank Length /mm	最大切料长度 Max.Cut-off Length /mm	滑台行程 Stroke /mm	每分钟产量 Capacity /pcs/min	主模尺寸 Main Die Diameter /mm	剪模尺寸 Cut-off Die Diameter /mm	冲模尺寸 Punch Die Diameter /mm	剪刀尺寸 Cutter Size /mm	主电机 Main Motor Power /kw	体积 Volume(L*W*H) /m	重量 Weight /kg
RB2415	Φ6.5	50	65	100	60-90	Φ46×95×2	Φ19×35	Φ31×72×4	10×32×80	5.5HP/4.0KW	2.3×1.3×1.2	2600
RB2420	Φ9	70	80	110	50-80	Φ50×120×2	Φ22×40	Φ35×80×4	12×40×85	7.5HP/5.5KW	2.4×1.25×1.6	4050
RB2425	Φ10	75	90	140	45-65	Φ58×150×2	Φ35×50	Φ38×120×4	14×45×105	24HP/15KW	4.1×1.75×1.79	6750
RB2430	Φ12.5	100	125	156	40-60	Φ70×150×2	Φ38×50	Φ50×130×4	16×50×125	20HP/18KW	4.05×1.8×1.9	8300
RB2440	Φ15	120	140	200	35-50	Φ80×220×2	Φ45×55	Φ58×150×4	20×65×125	30HP/22KW	5×1.9×1.9	15600

All specifications are subject to changes without prior notice

3- DIE 6- BLOW

COLD HEADING MACHINE SERIES

三模六冲冷镦机系列



RB3615

设备介绍 Mechanical Introduction

- ◆ 机身采用优质QT500-7铸件，整机机构紧凑，性能稳定。
- ◆ 强制润滑，油路、油槽布置合理，润滑更充分，有利于提高设备寿命。
- ◆ 电机、轴承、油泵等采用名牌产品，提高了设备的可靠性。

- ◆ The machine body is made of high - quality QT500-7 castings, with a compact structure and stable performance.
- ◆ Forced lubrication, reasonable arrangement of oil circuit and oil groove, sufficient lubrication are beneficial to improve equipment lifetime.
- ◆ Famous brand products are used for motors, bearings, oil pumps, etc., which improves the reliability of the equipment.



设备参数 Mechanical Parameters

机型 Model	最大可制外径 Max.Blank Diameter /mm	最大可制长度 Max.Blank Length /mm	滑台行程 Stroke /mm	每分钟产量 Capacity /pcs/min	主模尺寸 Main Die Diameter /mm	剪模尺寸 Cut-off Die Diameter /mm	精冲尺寸 Punch Die Diameter /mm	剪刀尺寸 Cutter Size /mm	主电机 Main Motor Power /kw	体积 Volume(L*W*H) /m	重量 Weight /kg
RB3615	Φ6.5	45	90	60-80	Φ46×100	Φ19×38	Φ31×75	10×32×75	5.5HP/4.0KW	2.5×1.6×1.5	4000
RB3620	Φ9	70	125	50-70	Φ50×130	Φ24×40	Φ35×85	12×32×85	7.5HP/5.5KW	2.8×1.9×1.9	5500
RB3625	Φ10	90	140	45-50	Φ58×150	Φ35×50	Φ38×120	14×45×105	24HP/18KW	3.4×2.1×2.0	10000

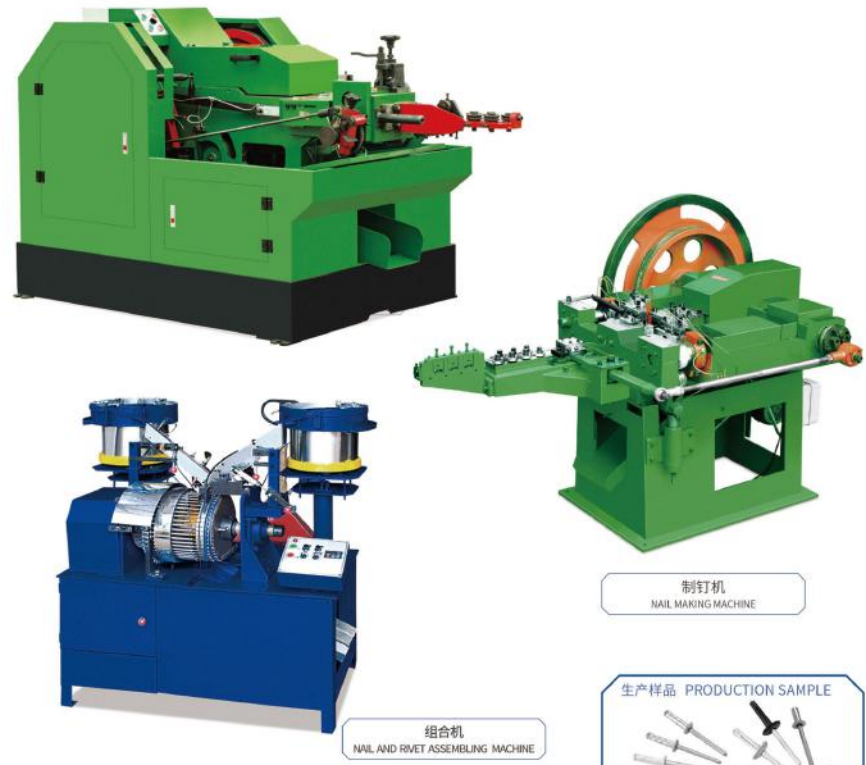
All specifications are subject to changes without prior notice



Heading Machine/Others 打头机/其它

BLAND RIVET MACHINE SERIES

拉铆钉组合机系列



制钉机
NAIL MAKING MACHINE

组装机
NAIL AND RIVET ASSEMBLING MACHINE



设备参数 Mechanical Parameters

机型 Model	最大可制外径 Max. Blank Diameter /mm	最大可制长度 Max. Blank Length /mm	冲程 Stroke	每分钟产量 Capacity /pcs/min	主模尺寸 Main Die Size (mm)	切模外径 Cut-off Die diameter (mm)	第一冲模外径 Punch Die (1st)(mm)	第二冲模外径 Punch Die (2st)(mm)	剪刀尺寸 Cutter Size /mm	主机马力 Main Motor Power(HP)	体积 Volume(L*W*H) /m	重量 Weight /kg
DL4-20A	Φ5.0	20	68	80-120	Φ32×105	Φ15×30	Φ25×65	Φ25×65	9×30×70	2.2	1.75×0.85×1.15	1300
DL5-30A	Φ8.0	30	102	80-100	Φ34.5×130	Φ19×35	Φ31×75	Φ31×75	9×30×72	3	2.30×1.08×1.15	1700
DL5-40A	Φ8.0	40	102	80-100	Φ34.5×145	Φ19×35	Φ31×75	Φ31×75	9×30×72	3	2.35×1.08×1.15	1750

All specifications are subject to changes without prior notice

Screw Head Sorter



KPH-031 KPH-035 KPH-034

Centrifugal Cleaner



CL40-M
Moving Type Cleaner
Pump: Dia. 1/2" PT
Rotate Speed: 3000RPM
Weight: 150Kg
Motor: 2HP-4P, 1/2HP-6P
Flow Rate: 1~40L/MIN
Dimension: 50x80x115cm

Chip Separator



KPS-061

Grinding Machine



KPH-032

Conveyor



KPL-014 KPL-013 KPL-012 KPL-011